



2020

# ANNUAL REPORT



WISCONSIN ACADEMY of FAMILY PHYSICIANS

---



210 Green Bay Road, Theinsville, WI 53092



[wafp.org](http://wafp.org)



[academy@wafp.org](mailto:academy@wafp.org)



(262) 512-0606



[@WisconsinAFP](https://twitter.com/WisconsinAFP)

## DEAR MEMBERS,

---

This was a challenging and pivotal year for our Family Physicians. Not only did our members play a key role in combating the COVID-19

pandemic, we also took a pause to adapt our strategic goals and realign our advocacy and educational efforts as the health crisis shined a light on various areas of health disparity and inequity.



WAFP looks forward to continuing to advocate for a more equitable healthcare system and the future of Family Medicine.

*Sabina Singh, MD*

**2020 WAFP President**

## OUR MISSION

---

Our mission is to promote excellence in health care and to improve the health of the people of Wisconsin through the advancement of the art and science of Family Medicine, the specialty of Family Medicine and the professional growth of Family Physicians.

# MEMBERSHIP AT A GLANCE

---

The **Wisconsin Academy of Family Physicians (WAFP)** is the **14th largest state chapter** of the American Academy of Family Physicians (AAFP) which has **more than 136,700 members**. WAFP is proud to have served Wisconsin's Family Medicine physicians for **72 years**.

**315**

100%  
RESIDENT  
MEMBERS

**83.7%**

OF WISCONSIN FAMILY  
PHYSICIANS ARE  
REPRESENTED BY  
WAFP

**2,931**

TOTAL CHAPTER  
MEMBERS

**424**

STUDENT  
MEMBERS

**225**

LIFE  
MEMBERS

**1,941**

TOTAL ACTIVE MEMBERS

# 2020 STRATEGIC PLAN

---

## KEY AREAS OF FOCUS

### Promote Healthy Physician, Healthy Practice, Healthy Patients

**Goal 1** / Help members with practice issues

**Goal 2** / Promote practice transformation

**Goal 3** / Help members with wellbeing and burnout issues

### Promote Family Medicine Advocacy

**Goal 1** / Develop and promote Family Physicians as health policy leaders and partners

**Goal 2** / Move to proactive advocacy in the legislative process

**Goal 3** / Advocate for Family Physician friendly practice of medicine

### Nurture and Develop Family Physician Leaders

**Goal 1** / Nurture the development of Family Physician leaders in communities, practices and WAFP/AAFP

### Grow and Maintain a Family Medicine Workforce

**Goal 1** / Identify opportunities for public health and Family Medicine to collaborate

**Goal 2** / Attract interest in Family Medicine; grow Family Physicians; maintain active membership; keep members in medicine and WAFP

**Goal 3** / Create strategies to assist AAFP in achieving the goal of 25% of student selecting Family Medicine by 2030

# 2020 YEAR IN REVIEW

---

## We Promoted Physician Wellbeing & Practice Innovation

- Established a COVID-19 weekly newsletter to provide crucial updates and provider resources throughout the pandemic
- Partnered with the Ohio, Indiana, Maryland and Minnesota state AAFP chapters to offer a virtual, ABFM-endorsed KSA group study on Hypertension; 11 members participated
- Created Friday Focus, a quarterly newsletter series to provide members physician wellbeing resources
- Offered a virtual, ABFM-endorsed KSA group study on Care of Children in partnership with the Illinois, Indiana, New York and Ohio state AAFP chapters; 24 members participated
- Supported partner organizations in co-promoting WCRGME's *Off the Beaten Path*, the Wisconsin Healthcare Workforce Summit and Family Medicine Midwest's annual conference

"After serving on the WAFP Board of Directors and continuing to participate in its legislative committee, I am more convinced than ever that WAFP is essential for ensuring that the interests and concerns of family medicine are heard in Wisconsin."

- Dr. Robert Sander, Ascension St. Michael's in Stevens Point



# 2020 YEAR IN REVIEW

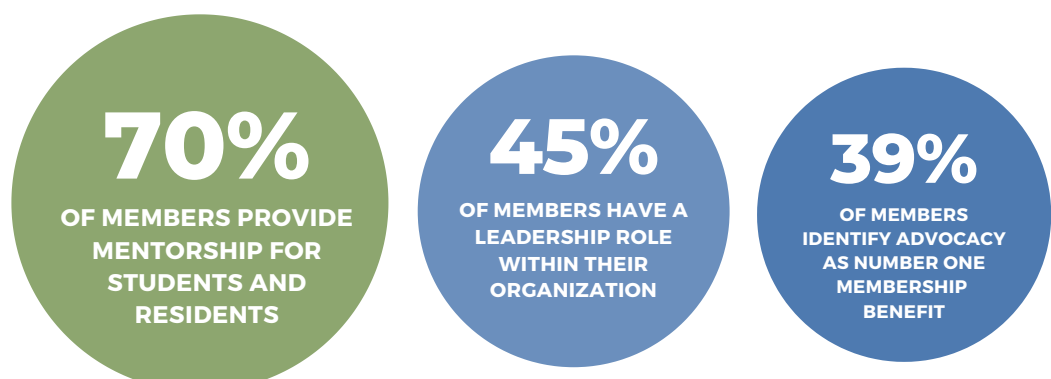
---

## We Advocated for Family Medicine

- Advocated for payment parity in telehealth
- Moved forward on legislative efforts to expand Medicaid
- Organized and hosted Doctor Day, Wisconsin's largest annual physician advocacy event; over 50 chapter members attended for the first time virtually.
- Our PAC, the WIFamMedPAC supported 21 candidates for state office.
- Our Conduit raised \$1,000 and supported 9 candidates for state office.

## We Nurtured & Developed Family Physician Leaders

- Recognized all WAFP members as 2020 Family Physician of the Year for their resilience combating COVID-19
- Addressed systemic racism in medicine by creating WAFP's Health Equity and Anti-Racism Workgroup
- 2020 was Alan Schwartzstein, MD's fifth year on the AAFP Board of Directors, and third as the Speaker.



# 2020 YEAR IN REVIEW

---

## We Helped Grow & Maintain the Family Medicine Workforce

- Launched the WAFP-Foundation Family Medicine Partners Program, a monthly giving community committed to sustaining the future of Family Medicine
- Supported our 17 state residency programs with virtual visits and practice resources for new residents
- Supported Family Medicine Interest Group (FMIG) activities across Wisconsin.

**86%**

OF RESIDENTS SURVEYED  
ARE SATISFIED WITH THEIR  
SELECTION OF FAMILY  
MEDICINE

**74%**

OF MEDICAL STUDENTS  
SURVEYED PLAN TO  
SELECT A FAMILY  
MEDICINE RESIDENCY

**62%**

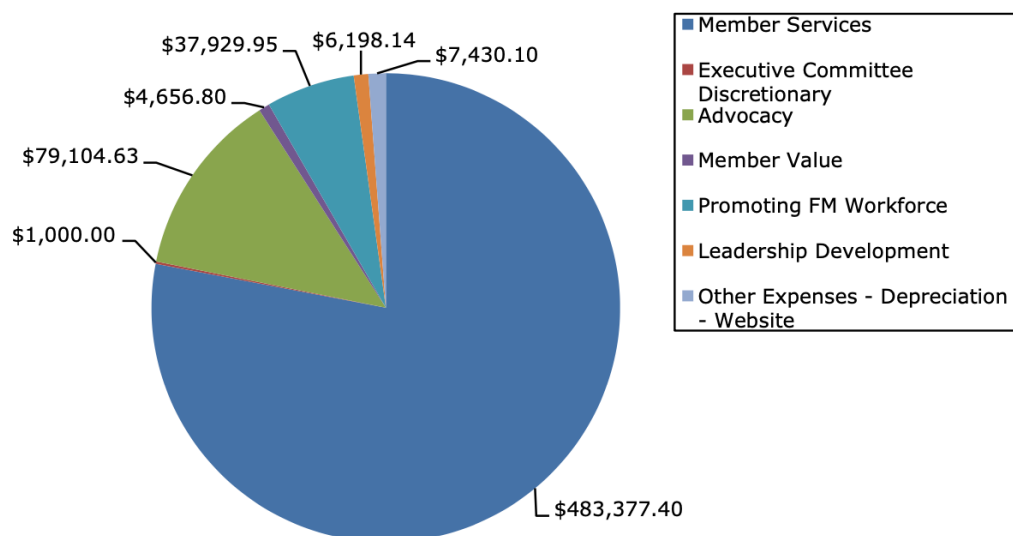
OF OF RESIDENTS  
SURVEYED ARE  
LIKELY TO PRACTICE  
IN WISCONSIN



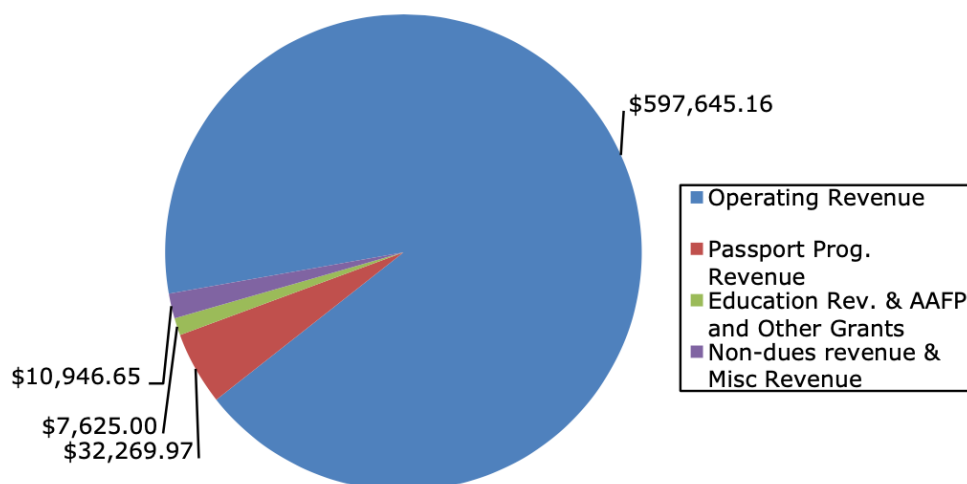
# 2020 FINANCIAL REPORT

---

## Total Expenses



## Total Support & Revenue





# 2020 FINANCIAL REPORT

## Statement of Revenue, Expenses & Balance Sheet

WAFP		31-Dec-20		
ASSETS			Income	
Current Assets			Operating Revenue	\$597,645.16
	Ckg./Savings Acct.	\$526,646.68	Passport Prog. Revenue	\$32,269.97
	Accounts Receivable	\$0.00	Education Rev. & AAFP an	\$7,625.00
	Fixed Assets	\$0.00	Non-dues revenue & Misc	\$10,946.65
	Current Assets	\$1,950.00	<b>Total Income</b>	<b>\$648,486.78</b>
	Other Assets	\$0.00	<b>Expense</b>	
	<b>TOTAL A</b>	<b>\$528,596.68</b>	Member Services	\$483,377.40
LIABILITIES & EQUITY			Executive Committee Disc	\$1,000.00
Liabilities			Advocacy	\$79,104.63
	Current Liabilities	\$306,786.41	Member Value	\$4,656.80
Equity			Promoting FM Workforce	\$37,929.95
	Opening Bal Equity	\$0.00	Leadership Development	\$6,198.14
	Temporarily Restrict	\$29,914.00	Other Expenses - Depreci	\$7,430.10
	Retained Earnings	\$122,736.01	<b>Total Expense</b>	<b>\$619,697.02</b>
	Net Income	\$69,160.26	Net Ordinary Income	\$28,789.76
	<b>TOTAL L</b>	<b>\$528,596.68</b>	Other Income	
			Investment Gain / (Loss)	\$40,370.50
			<b>Total Other Income</b>	<b>\$69,160.26</b>
			Total Net Income	<b>\$69,160.26</b>

# 2020 BOARD OF DIRECTORS

---

<b>Lisa Dodson, MD</b>	<b>Board Chair / Wausau</b>
<b>Sabina Singh, MD</b>	<b>President / Green Bay</b>
<b>Elizabeth Pyne, MD</b>	<b>President-Elect / Milwaukee</b>
<b>Rodney Erickson, MD</b>	<b>1st Vice President / Tomah</b>
<b>Eric Stader, MD</b>	<b>Treasurer / Lancaster</b>
<b>Zachary Baeseman, MD</b>	<b>Foundation President / Waupaca</b>
<b>Danielle Gindlesberger, MD</b>	<b>Director / Sun Prairie</b>
<b>Beth Menzel, MD</b>	<b>Director / Appleton</b>
<b>Jim Slawson, MD</b>	<b>Director / Milwaukee</b>
<b>Diana Flint, MD</b>	<b>Director / Madison</b>
<b>Wesley Fox, MD</b>	<b>Director / Holmen</b>
<b>Thomas Hahn, MD</b>	<b>Director / Madison</b>
<b>Rebecca Lundh, MD</b>	<b>Director / Waukesha</b>
<b>Erin Morcomb, MD</b>	<b>Director / La Crescent</b>
<b>Robert Sander, MD</b>	<b>Director / Custer</b>
<b>Megan Cory</b>	<b>Student Director / Milwaukee</b>
<b>Josh Matzke</b>	<b>Student Director / West Allis</b>
<b>Taylor Boland, MD</b>	<b>Resident Director / Madison</b>

# 2020 BOARD OF DIRECTORS

---

<b>Heather Harrison, MD</b>	<b>Resident Director / Milwaukee</b>
<b>Andrea Gavin, MD</b>	<b>AAFP Delegate / Plymouth</b>
<b>Suzanne Gehl, MD</b>	<b>AAFP Delegate / Oconomowoc</b>
<b>Mike Mazzone, MD</b>	<b>AAFP Alternate Delegate / Brookfield</b>
<b>Robert Sedlacek, MD</b>	<b>AAFP Alternate Delegate / Merrill</b>
<b>Larry Pheifer</b>	<b>Executive Director / Theinsville</b>
<b>Brandon Wimmer</b>	<b>Deputy Executive Director / Theinsville</b>
<b>Becky Wimmer</b>	<b>Chief Strategy Officer / Theinsville</b>
<b>Tim Hoven</b>	<b>Government Relations Director / Madison</b>

"Membership in the WAFP means that I can support and be supported by fellow family physicians just like me. Our WAFP is instrumental in shaping legislation to form a healthier Wisconsin. The WAFP allows me to advocate for my patients at a national level at NCCL to help create a stronger community. They support the state residency programs and help create valuable educational training opportunities for future and current family docs."

-Dr. Ani Saryan Kopf,  
Ascension Medical Group

